

Places that feel like home

# Nishi-Kyusyu Sasebo Regional Tourism



西九州させぼ  
広域都市圏

SASEBO



HIRADO



MATSUURA



SAIKAI



HIGASHI  
SONOGI



KAWATANA



HASAMI



OJIKA



SHIN  
KAMIGOTO



IMARI



ARITA



SAZA



Sightseeing Guidebook

# Nishi-Kyusyu Sasebo Regional Tourism

Wide area map



This area is full of charm, from its history and culture that come from being in the westernmost tip of Japan to natural surroundings that offer seasonal views and cuisine that utilizes the region's attributes. Here, we introduce the sights to see in 12 areas.

### Table of Contents

- Introduction P04~
- Recommended Spots P19
- Local Products P20
- Regional Dishes P21~
- Sightseeing Routes P23~
- Find Your Way P25



Goto Islands

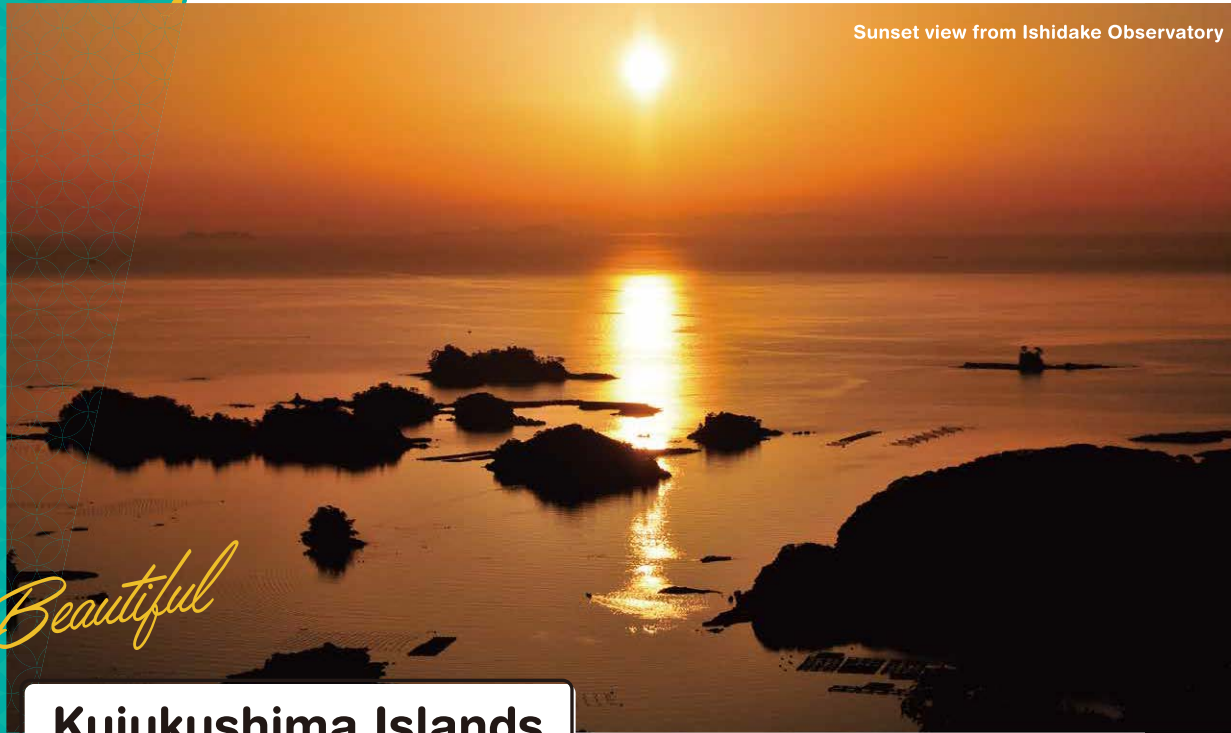


Enjoy nature and a theme park at once!

# Sasebo

The city is blessed with bountiful natural surroundings, represented by the world's most beautiful bay, Kujukushima. It is also an international port with a US naval base.

Sunset view from Ishidake Observatory



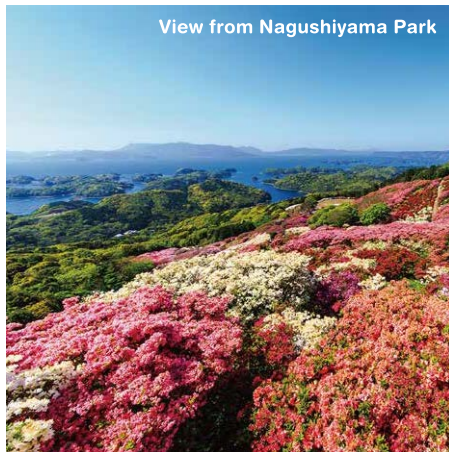
*Beautiful*

## Kujukushima Islands

Enjoy a special moment in the stunning, world-renowned vista.

Complex rias and 208 islands create exquisite natural landscapes. Over 80% of the 288.5km coastlines are untouched and conserved.

View from Nagushiyama Park



View from Tenkaiho Observatory



Enjoy a sweeping view of the spectacular Kujukushima Bay, a member of the Most Beautiful Bays in the World Club, represented by Mont-Saint-Michel in France and San Francisco Bay in the USA.



*Marine Sports*

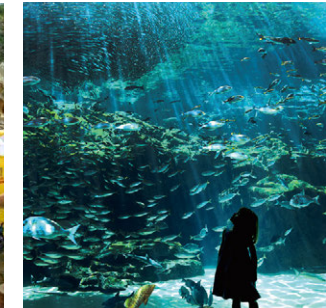
Kujukushima Cruising Boat Pearl Queen



*Cruises*



Set foot on a desert island



Kujukushima Aquarium Umi Kirara



Dolphin show

Water sport Cruise Aquarium



### Kujukushima Pearl Sea Resort

Located at the gateway to Kujukushima, the resort complex offers visitors the chance to experience the islands' charms in various ways.

📍 1008, Kashimae-cho, Sasebo.  
 Car: Approx. 15 min from JR Sasebo Sta.  
 Bus: At Sasebo Station bus stop 6, get the bus for Pearl Sea Resort & Kujukushima Aquarium for 25 min.

*Foods of Sasebo*



### Sasebo's famous delicacy Kujukushima oysters

The Kujukushima oyster is popular for its rich umami among Japanese oysters. Enjoy the fresh and luxuriant flavor of oysters grown in one of the world's most stunning bays (Kujukushima).

*Piping-hot & plump!*





## Huis Ten Bosch

The resort impresses visitors with flowers and lights

Seasonal blooms Lights Attractions

Seasonal flowers bloom all year on the pretty streets of Huis ten Bosch. The site is illuminated by 13 million sparkling light bulbs, a world record, at night. The resort offers an array of events, shows, and exciting games and attractions for families. It is a hotel/entertainment complex that requires more than a day to fully enjoy.

Fantasia City of Lights



📍 1-1, Huis ten Bosch-machi, Sasebo  
 Train: short walk from JR Huis ten Bosch Sta.  
 Bus: 50 min by Saihi Bus from Nagasaki Airport.  
 Boat: 50 min by high-speed boat from Nagasaki Airport.  
 Car: 10 min from Nishi-Kyushu Expressway Daito IC.



Huis ten Bosch's official website



Hydrangea Festival

## Events



THE REAL x DIGITAL Cutting Edge Area is Coming!  
 ©HUISTENBOSCH

## Foods of Sasebo

Try them when you're in Sasebo! Sasebo specialties

### Sasebo burger

The burger's history dates back to 1950, when a recipe was obtained directly from the US naval base.



### Lemon steak

The dish originating in Sasebo was created to suit the Japanese palate.



## Full Sasebo Tour

Enjoy a guided tour!



Tour Japan Heritage sites

### Sasebo sightseeing cruise bus Umikaze



Days Mon. - Wed. & Fri. - Sun.

Duration Approx. 100 min

The guided tour takes visitors to famous sites on a luxury tour bus. Routes on offer include City Exploration and Tenkaiho Observatory for enjoying the islands of Kujukushima.



See it up close♪

### Sasebo Naval Port Cruise



Days Sat., Sun. & holidays only. Departs at 11:30 am.

Duration Approx. 60 min \*Closed for the winter (Dec. - Feb.)

The popular guided cruise takes visitors to see the shipyard, the US Navy's facilities, and the MSDF vessels.



Welcome to Sasebo

### Sasebo City Walk Tour



Days Every Saturday from 1 PM to 3 PM (open to requests)

Duration Approx. 120 min (Guided tour in English)

Explore the city on foot with a guide and learn about the city's charms, Japanese culture, and history you would otherwise miss.



### Book & Buy Tickets

Sasebo Tourist Information Center (Open 9 AM - 6PM/open all year)  
 21-1, Miura-cho, Sasebo, Nagasaki Prefecture (JR Sasebo Station)

Access Sasebo's tourism information site▶



Experience Japan in a castle town

# Hirado

Listed as a World Heritage site, this town is associated with crypto-Christians. Historic and exotic ambiance coexist with rich natural surroundings.



**Hirado Castle**

Castle Accommodation

## Hirado Castle Kaijuyagura

The lodging is housed in Hirado Castle, chosen as one of Japan's top 100 castles. The two-storied maisonette for hire is in a superb location with views of the majestic sea and beautiful Hirado Bridge.

📍 Iwanoue-cho, Hirado, Nagasaki Prefecture  
☎️ 0950-22-9140 (Hirado City Tourism Section)



## Kasuga Village and Sacred Places in Hirado

Stunning vista

Part of a World Heritage site, this area offers a unique landscape that had remained pretty much unchanged since the 16th century when Christianity was introduced. These outstanding historical sites were preserved and passed down through the generations, and include beautiful rice terraces that stretch from the sea to the mountains.

📍 166-1, Kasuga-cho, Hirado, Nagasaki Prefecture ☎️ 0950-22-7020  
🕒 8:30 AM - 5:30 PM (Kasuga Village Information Center Katarina)

## Kan'untei tearoom

Green Tea

(Inside Matsuura Historical Museum)

This tearoom was built in 1893 by the 37th head of the Matsuura family. The rustic farmhouse-style building is based on a design by Sen no Rikyu, the father of tea ceremony. Visitors can enjoy a Chinshin-style tea ceremony.

📍 12, Kagamigawa-cho, Hirado, Nagasaki Prefecture  
☎️ 0950-22-2236  
🕒 8:30 AM - 5:30 PM



Wear a kimono



## Foods of Hirado



## Seafood bowl

The sumptuous dish is made with Hirado's fresh seafood. Enjoy the flavors of in-season fish such as yellowtail and sea bream.

A seaside town with history

# Matsuura

Surrounded by the sea, this town has a flourishing fishery industry. The area retains the landscapes of old Japan and has a history associated with the Matsuura Party, aka the "sea warriors."

## Archetypal scenery of Japan

### Doya Rice Terraces

Stunning vista

A rice paddy is where we grow rice, Japan's staple food. There are about 400 rice terraces on the side of a mountain in the Doya district. The sun illuminates the rice terraces as it sets over the sea. The gorgeous view is a familiar and quintessentially Japanese sight.

📍 Doyamen, Fukushima-cho, Matsuura, Nagasaki Prefecture



## Sights



## Oyama Park & Iroha Islands

Park Stunning vista

About 800 cherry trees bear flowers at once in the spring. The park is a famous Hanami (cherry blossom viewing) spot. It also offers a view of the bijou Iroha Islands across Imari Bay. Visitors can enjoy the rare October cherry blossoms in the fall.

📍 1517-1, Hashimen, Fukushima-cho, Matsuura, Nagasaki Prefecture

## National historical site Takashima Kozaki Remains



History

Takashima Island served as the last battleground in the Mongolian army's attack of 1281. Relics from the battle, including the sunken Mongolian ship, have been discovered at the bottom of the sea since 2010. Visitors can see important relics recovered from the sea and documents on display.

📍 146, Kozakimen, Takashima-cho, Matsuura, Nagasaki Prefecture  
☎️ 0955-48-2098 🕒 9 AM - 5 PM

## Foods of Matsuura



## Fried horse mackerel

The Japanese eat horse mackerel regularly. Matsuura is famous for its fried fresh horse mackerel as the city lands a large catch of the fish.

SAIKAI

A town where nature provides solace

# Saikai

The sea and mountains surround the lush region. It has a history of Christianity as well.



Zoo

## Nagasaki Bio Park Animals Plants

The zoo houses llamas, hippos, capybaras, and squirrel monkeys in an environment close to its natural state. Visitors can pet and feed the animals. There is also a botanical garden designed to replicate a subtropical climate.

2291-1, Nakayamago, Seihi-cho, Saikai, Nagasaki Prefecture  
0959-27-1090  
10 AM - 5 PM (last admission 4 PM)



## Sound Shower Museum Music

The sound museum is housed in an old school building in a tranquil forest. It has about 160,000 vinyl records and antique phonographs and speakers, which visitors can use to listen to music.

342-80, Yukinoura Gotsugo, Oseto-cho, Saikai, Nagasaki Prefecture  
0959-37-0222 10 AM - 6 PM

Sights



## Yokoseura Park History

Japan's first Christian daimyo (feudal lord), Omura Sumitada, opened the port of Yokoseura. This is believed to be where the Portuguese missionary Luís Fróis landed. The port offers the view of Hachinoko Island with the landmark white cross from the old days and the port town.

2933-13, Yokosego, Saikai-cho, Saikai, Nagasaki Prefecture

Foods of Saikai

## Saikai Donburi Fair

Visitors can enjoy plenty of locally-sourced fish, meat, and vegetables. The event sees restaurants serve a variety of rice bowl dishes. Period: Sep. - Early Nov.



IMARI

A town with world-famous early Imari ware

# Imari

The town is famous for the early Imari ware shipped out from port in the Edo period. The pottery's history and culture are evident all over town.



## Imari Ware

Imari ware carries on Nabeshima ware's tradition, produced exclusively for the Shogun family and cabinet officials. It comes in three styles: Ironabeshima, Nabeshima Sometsuke, and Nabeshima Seiji.

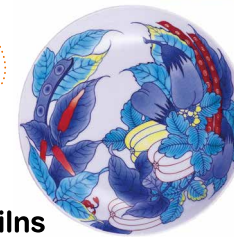


## Meander through a town with an atmosphere of early Imari culture. History Walk

This town prospered as the shipping port for world-famous early Imari ware, and is decorated with Imari ware dolls. It is also famous for three bridges that are believed to bring good fortune in marriage and love to couples and lovers if they cross them.

0955-20-9031

Try pottery



Sights

## Okawachiyama - Village of the secret kilns

Pottery experience

This village flourished as the home of Saga Nabeshima pottery kilns and has a history that dates back over 350 years. Enjoy the unusual rock formations that resemble Chinese landscape paintings and streets lined with a row of 30 pottery studios with impressive chimneys. Visitors can also try their hands at making pottery.

Hei, Okawachi-cho, Imari, Saga Prefecture



Foods of Imari



## Imari Beef

Imari beef, carefully raised in abundant natural surroundings, has a fine texture and is exquisitely tender.

Savor good-quality green tea

# Higashisonogi

Higashisonogi produces the largest amount of green tea in Nagasaki. Chiwata District has had many popular spots pop up, including cafés and restaurants.



Tenku-no-Chabatake (Sonogi tea plantation)



## Sonogi Tea

### Sonogi Tea & Tenku-no-Chabatake

Green Tea Stunning vista

Its intense aroma and umami characterize Sonogi tea. It is also called Tamaryokucha (tama = ball) because of the round-shaped tea leaves. The Tenku-no-Chabatake, which served as a movie location, is attractive for its uniquely magnificent scenery.

*Sights*

### Sonogi-no-Sho Rest Area Shopping

This shop sells regional specialties, including Sonogi tea and fresh vegetables. Visitors can enjoy local dishes such as a multi-course meal that includes a whale dumpling soup. Chachayaki, a cake filled with Sonogi tea-flavored bean jam, is a popular treat.

📍 747-2, Sonogishukugo, Higashisonogi-cho, Sonogi District, Nagasaki Prefecture  
☎ 0957-49-3311 🕒 7 AM - 6 PM (local specialty shop)



### Higashisonogi History and Folklore Museum

History

The museum showcases the history, culture, and tradition of Higashisonogi. It exhibits valuable documents and artifacts relating to the town's precious resources, including Sonogi tea and whales. The museum is near the Sonogi-no-Sho rest area.

📍 430-5, Sonogishukugo, Higashisonogi-cho, Higashisonogi District, Nagasaki Prefecture  
☎ 0957-46-1632  
🕒 9 AM - 5 PM

*Foods of Higashisonogi*



### JR Chiwata Station Chiwata Shokudo (diner)

JR Chiwata Station offers a sweeping view of the expansive Omura Bay. The quaint station building provides an exquisite sunset view that draws many tourists and photographers. Chiwata Shokudo (diner) in the station serves a spicy curry of the day prepared with seasonal ingredients.

📍 750-3, Hiranitago, Higashisonogi-cho, Higashisonogi District, Nagasaki Prefecture  
☎ 0957-46-0961 🕒 11 AM - 6 PM (while stocks last)



Spicy curry of the day

See 200 peacocks

# Kawatana

Surrounded by the sea and mountains, the town of Kawatana offers many spots for recreation, including hiking and camping! Spend a relaxing time enjoying local specialties and soaking in a hot spring bath.



## Peacock Garden

### Kawatana-cho Osaki Nature Park Peacock Garden Animals

This park keeps various animals, including ponies and about 200 peacocks. About 2,000 cherry trees bear flowers in the spring, and rhododendrons and hydrangeas bloom in the early summer.

📍 Ogushigo, Kawatana-cho, Sonogi District, Nagasaki Prefecture  
☎ 0956-83-3210  
🕒 Normal opening hours: 9 AM - 5 PM  
Jul. - Sep.: 9 AM - 6 PM



### A Christian's tombstone History

This tombstone marks the resting place of Nisuke Tominaga's wife (d.1622), a crypto-Christian. Many Christian tombs were destroyed in the exposure of crypto-Christians by the Omura Clan in 1657, but this tomb survived unharmed.

📍 Shimogumigo, Kawatana-cho, Higashisonogi District, Nagasaki Prefecture

*Sights*

*Foods of Kawatana*



### Kawatana Manju

(Isamiya - Japanese confectionary)

Up to 6,000 of Kawatana's specialty products are sold every day. The simple bite-size Japanese steamed cake is sweet and moist.

📍 15-1, Sakae-machi, Kawatana-cho, Higashisonogi District, Nagasaki Prefecture  
☎ 0956-82-2310 🕒 8 AM - 7:30 PM



### Shiosai-no-Yu (hot spring baths) Hot spring

This bathhouse is popular for its open-air baths where you can enjoy a bath, feeling the sea breeze, while gazing upon tranquil Omura Bay. It also has large bathrooms, cold water baths, and saunas. Visitors can enjoy dining and massage on the premises.

📍 272, Ogushigo, Kawatana-cho, Higashisonogi District, Nagasaki Prefecture ☎ 0956-82-6868 🕒 9:30 AM - 10 PM

Discover art-like tableware

# Hasami

Hasami is a town of pottery with a 400-year history. This popular place attracts nationwide attention for mixing tradition with modernity.

## Hasami Ware



Tradition

This traditional dinnerware has a 400-year history dating back to the Edo era. It is durable and easy-to-use, with a unique design.

### Togei-no-Yakata (porcelain center)

Shopping Experience

The first-floor shop sells local specialties and various Hasami wares. The second floor showcases the history of 400-year-old Hasami ware. The studio at the back offers a potter's wheel and a pottery painting experience.

📍 2255-2, Isekigo, Hasami-cho, Higashisonogi District, Nagasaki Prefecture

☎ 0956-85-2290 🕒 9 AM - 5 PM

Yakimono Park

Sights



Many photogenic spots, including the Kilns of the World!



## Onigigo Rice Terraces

Stunning vista

The story goes that Onigigo's rice terraces were completed in the mid-Edo period. The area contains about 400 rice terraces where visitors can enjoy seasonal views. They are considered to be one of Japan's 100 top rice terraces.

📍 Onigigo, Hasami-cho, Higashisonogi District, Nagasaki Prefecture

Foods of Hasami

## Bunka-no-To Shikisha

Locals restored this building, which once housed an old pottery kiln. The restaurant serves home-made dishes prepared with local ingredients, and offers a summer specialty, Hiyajiru (chilled soup).



📍 660, Nakaogo, Hasami-cho, Higashisonogi District, Nagasaki Prefecture

☎ 0956-27-6051

🕒 10 AM - 4 PM



## Nishinohara

Shopping Dining

This popular area in town has streets lined with cafes and knickknack shops. Buildings that house the historic old Fukko Ceramics Factory, listed as one of Japan's tangible cultural properties, have been painstakingly renewed.

📍 2187-4, Isekigo, Hasami-cho, Higashisonogi District, Nagasaki Prefecture

Experience the island's traditional way of life

# Ojika

This island offers the archetypal scenery of Japan, where nature and people coexist. Enjoy a slow-paced holiday on the small island.

## Kakinohama Beach

Leisure

These sea waters are the clearest on this island. The crystalline shoal and exquisite sandy beach are popular among families with children. The lava rocks that appear at low tide are beautiful. There are also free toilets and shower rooms.

📍 Yanagigo, Ojika-cho, Kita-Matsuura District, Nagasaki Prefecture



Sights

## Akahama Beach

Stunning vista

The beach is marked by a red sandy beach unique to volcanic islands. Red sand produced by volcanic gravel is rarely seen in Japan.

📍 Maegatago, Ojika-cho, Kita-Matsuura District, Nagasaki Prefecture



## Hime-no-Matsubara (pine grove)

Stunning vista

Rows of impressive black pine trees stretch for 450 meters. The scenery of the old avenue with trees from 1675 has been chosen as one of Japan's top 100 views with pine trees. Shijiki Shrine's hall of worship can be found along the way.

📍 Yanagigo, Ojika-cho, Kita-Matsuura District, Nagasaki Prefecture

Wildlife watching



## Nozaki Island's wild deer

About 400 wild deer inhabit the nearby Nozaki Island. The sight of them creates an exotic ambiance.

Foods of Ojika

## Kankoro Mochi

One of the Goto Islands' regional dishes, kankoro mochi, is made of parboiled sweet potatoes and glutinous rice and is moderately sweet.





An island that stirs emotions

# Shinkamigoto

The town of Shinkamigoto is known as the island of prayers. It is attracting attention as an important tourist site that tells the story of the hidden Christians.



## World Heritage churches

29 churches are dotted around Shinkamigoto. There is one in a Village on Kashiragashima Island, one of the constituent assets of World Heritage. The churches are all differently designed and worth seeing.

### Aosagaura Church (Left)

This pretty red brick church is on a hill overlooking Nama Bay. It was designed and constructed by Father Osaki and volunteers from the local congregation in 1910.

📍 1241, Namago, Shinkamigoto-cho, Minami-Matsuura District, Nagasaki Prefecture

### Kashiragashima Church (Right)

The stone-built church is a rarity in Japan. Designed by Yosuke Tetsukawa in 1919 and built by volunteers from the local congregation, the church celebrated its centenary in 2019. The church is open for viewing (reservation required).

📍 638, Kashiragashima Island, Tomosumigo, Shinkamigoto-cho, Minami-Matsuura District, Nagasaki Prefecture

## Sights

Stunning vista

### Hamagurihama Beach

The white sands and clear shoaling beach are so remarkable that the Ministry of the Environment has designated the beach as one of Japan's top 100 exceptional beaches. It shows contrasting beauties at high and low tides. The spot is popular among tourists and photographers.

📍 1004, Nanamego, Shinkamigoto-cho, Minami-Matsuura District, Nagasaki Prefecture



Stunning vista

### Sunset at Yagatame (Shirakusa Park)

One of the best scenic spots on the island. Revel in the spectacular view created by the 10-meter high conical rock against the East China Sea sunset. Bright orange-colored lilies bloom in the summer.

📍 Shirakusa Park Sonogo, Shinkamigoto-cho, Minami-Matsuura District, Nagasaki Prefecture

## Foods of Shinkamigoto



### Island fishermen's breakfast

Kamigoto's breakfast is made with an abundance of the island's fresh seafood. Enjoy it with gusto in an oyster hut.

📍 Kamigoto-cho Fisher's Union Oyster Hut (tarp covered) Aokatago, Shinkamigoto-cho, Minami-Matsuura District, Nagasaki Prefecture

The entire town is an open-air art museum

# Arita

The town has preserved the tradition of Arita ware for over 400 years. The streets retain many old pottery and are notable for building designs that give a sense of the old days.

## Arita Ware



Porcelain with a history of over 400 years is produced in the suburbs of Arita, Saga Prefecture. It features delicate patterns over a white base.



### Tour Gen-Emon Kiln tour

This pottery is popular among a wide range of people because of its unique contemporary designs used to decorate the early Imari-style pottery and sophisticated patterns. The studio is open to the public for viewing. There is an early Imari museum attached to the site.

📍 2726, Hei, Maruo, Arita-cho, Nishi-Matsuura District, Saga Prefecture

☎ 0955-42-4164

🕒 Weekdays 8 AM - 5 PM \*The shop is open on Sat., Sun. & holidays.

## Sights



Shopping Dining Experience

### Arita Porcelain Park

Sake/shochu and drinking vessels are the park's theme. The building was designed after the Zwinger in Dresden, Germany. In addition to dining and shopping, visitors can enjoy trying the potter's wheel and pottery painting.

📍 340-28, Otsu, Toya, Arita-cho, Nishi-Matsuura District, Saga Prefecture

☎ 0955-41-0030

🕒 9 AM - 5 PM (varies by shops)



### The Kyushu Ceramic Museum Art museum

The museum exhibits a collection of masterpieces focusing on ceramics from all over Kyushu, including those from the Hizen district. The Kambara Collection (early Imari ware) and Shibata Collection (Arita ware from the Edo era) are worth seeing.

📍 3100-1, Otsu, Toshaku, Arita-cho, Nishi-Matsuura District, Saga Prefecture

☎ 0955-43-3681

🕒 9 AM - 5 PM

## Foods of Arita



### Arita Ware Gozen (meal)

A new regional dish served by four restaurants in town lets you enjoy Arita's food ingredients and gorgeous Arita dinnerware.

A town living alongside the Saza River

# Saza

The crystalline Saza River flows through the center of the neatly compact town. Unlike large cities, it has a friendliness unique to small towns.

## Saza River

### Kawazu Cherry Blossom & Ice Goby Festival

River Ice goby fishing Seasonal bloom

Ice goby fishing and Kawazu cherry blossoms in full bloom are Saza River's unique attractions in the spring. The sight of 260 Kawazu cherry trees planted along the 1.5km riverside promenade in full bloom and the traditional ice goby fishing will go straight to your heart.

📍 Area around Hontabarumen, Saza-cho, Kita-Matsuura District, Nagasaki Prefecture

Sights



### Sarayama Park

Seasonal bloom Experience

About 20,000 irises, the largest number in north Kyushu, bloom in Sarayama Park's iris garden. The Sarayama park shop and pottery workshop are nearby, and the park bustles with many visitors during the Iris & Eel Festival period.

📍 Area around Kamogawamen, Saza-cho, Kita-Matsuura District, Nagasaki Prefecture

☎️ 0956-62-2101 🕒 9 AM - 6 PM



View from Mt. Furukawa

### Mt. Furukawa

Stunning vista Walking trail

The 3.3km Mt. Furukawa walking trail offers views of the rugged bedrock, laid bare through many years of upthrusts and erosion, and a glimpse into human faith from ten Buddhist statues.

📍 Area around Furukawamen, Saza-cho, Kita-Matsuura District, Nagasaki Prefecture



**Ice goby** Odorigui (= to consume live fish) is a famous way of eating ice goby. Other dishes include kakiage (tempura) and clear soup, which can be enjoyed in restaurants throughout the town.



西九州させぼ  
広域都市圏

# Stunning Views

See Stunning Seasonal Vistas!



Sights

Spring



## Saikaibashi Park's Cherry Trees

[Saikai]

Saikaibashi Park, with panoramic views of Hario-Seto Strait, sees cherry blossoms such as Yoshino and Oshima bloom en masse.

📍 Komukaego, Seihi-cho, Saikai, Nagasaki Prefecture

Spring



## Tanokashirago's Weeping Cherry Tree

[Hasami]

This over 100-year-old weeping cherry tree stands on a hill in Tanokashirago. It displays beautiful cascades of blossoms in late March.

📍 1689, Tanokashirago, Hasami-cho, Higashisonogi District, Nagasaki Prefecture

Spring



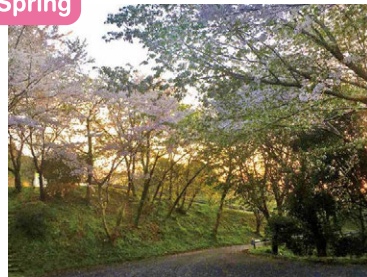
## Takenokoba Park's azaleas

[Imari]

Approximately 10,000 azalea trees spread across the park, located at about 400 meters above sea level. The viewing platform offers a gorgeous view of the city of Imari.

📍 1690, Takigawachi, Higashiyamashiro, Imari, Saga Prefecture

Spring



## Shiki-no-Mori Ishikura

[Matsuura]

Visitors can enjoy blossom-viewing and hiking in the woodland park with cherry and azalea trees. The scenic spot offers a view of Imari Bay.

📍 Kobamen, Imafuku-cho, Matsuura, Nagasaki Prefecture

Fall



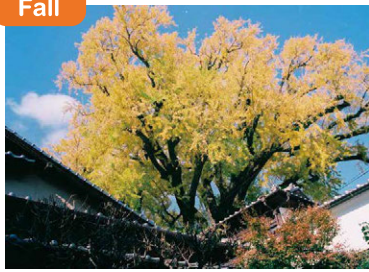
## Reflections of crimson foliage at Jufukuji Temple

[Sasebo]

Vibrantly-colored autumn foliage in the garden is reflected onto the acrylic sheet embedded into the tatami floor. It is quite picturesque.

📍 276, Nagasaka, Emukae-cho, Sasebo, Nagasaki Prefecture  
Admission: ¥500

Fall



## Oh'icho (giant ginkgo tree)

[Arita]

Japan's largest ginkgo tree is about 1,000 years old, 30 meters tall, with a circumference of 10 meters at the base, and a branch-span of 31 meters. It is a protected species of Japan.

📍 Izumiyama, Arita-cho, Nishi-Matsuura District, Saga Prefecture

Fall



## Chiwata Valley (Ryuto Spring)

[Higashisonogi]

This beautiful valley has 48 waterfalls and deep waters along the pristine Chiwata River. Its beauty is likened to a giant reclining dragon.

📍 Tonourago, Higashisonogi-cho, Higashisonogi District, Nagasaki Prefecture

Winter



## Japanese camellia (Tsubaki Park)

[Shinkamigoto]

About 6.8 million Japanese camellia trees grow naturally in Shinkamigoto. The giant camellia of Hinoekuchi in Aokatago on Nakadori Island is about 350 years old.

📍 Tsuwazakigo, Shinkamigoto-cho, Minami-Matsuura District, Nagasaki Prefecture

# Local Products

Enjoy Traditional Masterpieces

Pottery



## Hasami Ware

This traditional dinnerware has a 400-year history dating back to the Edo era. It is durable and easy-to-use, with a unique design.



## Arita Ware

Porcelain with a history of over 400 years is produced in the suburbs of Arita, Saga Prefecture. It features delicate patterns over a white base.



## Mikawachi Ware

This pottery flourished as the Hirado Domain's official kiln with a proud history dating back 400 years. The beauty of its white porcelain and artistry is second to none in Japan.



## Imari Ware

This porcelain was custom-made primarily for the Shogun families and the Shogun's cabinet ministers. It comes in three types: polychrome Nabeshima, indigo Nabeshima, and Nabeshima celadon.

Green Tea



## Sechibaru Tea [Sasebo]

This premium tea is grown deep in the mountains in an environment with bountiful cool water. It has a mellow taste with less bitterness.



## Sonogi Tea [Higashisonogi]

Sonogi tea has a markedly strong aroma and umami. It is known as tamaryoku-cha (tama = ball) because of the round leaves.



## Harada Seicha [Hasami]

The tea farm is in Onigi Tanada, one of Japan's best 100 terraced farm fields. The company's original brand Onigi Midori has mellow taste with less bitterness.

📍 25, Onigigo, Hasami, Higashisonogi District, Nagasaki Prefecture

Regional sake



## Mori Shuzo [Hirado]

Founded in 1895. The name of its flagship brand, Hiran, was Hirado's former name. Tours are available.

📍 31-2, Shinmachi, Hirado, Nagasaki Prefecture



## Munemasa Shuzo [Arita]

This brewery and distiller for tourists is situated within Arita Porcelain Park. Nonnoko is a satisfying drink made with 100% local ingredients. (Site tours are available)

📍 340-28, Otsu, Toya, Arita-cho, Nishi-Matsuura District, Saga Prefecture



## Matsuura-Ichi Shuzo [Imari]

Founded in 1716. Besides offering sake tasting, this brewery exhibits sake-making tools and farm equipment. Its Kappa (a mythical river creature) mummy is famous.

📍 312, Kasuku, Yamashiro-cho, Imari, Saga Prefecture



## Umegae Shuzo [Sasebo]

This brewery/distiller grows rice and makes sake and shochu, utilizing the rich natural surroundings and famous spring water drawn from 300 meters below ground. The building from the Edo era is worth seeing.

📍 317, Joma-cho, Sasebo, Nagasaki Prefecture



## Senryu Shuzo [Sasebo]

This sake and shochu maker of Mukae has a 300-year-old history. The main building dates back to the brewery/distiller's founding and is one of Nagasaki Prefecture's listed tangible cultural properties.

📍 209, Nagasaka, Mukae-cho, Sasebo, Nagasaki Prefecture

# Regional Dishes

Savor Uniquely Japanese Dishes

## Seafood

### Japanese Spiny Lobster [Saikai]

Japanese spiny lobsters from Sakito-cho, Saikai, have firm flesh and mostly weigh over 8kg as they are raised in rough seas. Lobster events are held in April and September.



### Ara-Nabe [Hirado]

Ara (saw-edged perch) is a massive, expensive fish that can weigh up to 30kg and is in season from fall to winter. It is a delicacy appropriate to the title the "king of hotpots."



### Tiger Puffer [Matsuura & Sasebo]



Tiger puffer is an upmarket fish. Nagasaki Prefecture is Japan's top farmed tiger puffer producer. Its sweet, high-quality meat is as good as that from the wild.



**Fresh squid sashimi [Sasebo]** Squid is enjoyed in various ways, from fresh sashimi to tempura.

### Farmed tuna [Shinkamigoto & Matsuura]

Nagasaki Prefecture is Japan's leading farmed tuna producer. During the farmed tuna fair, visitors can enjoy in-season tuna at participating stores in Shinkamigoto.

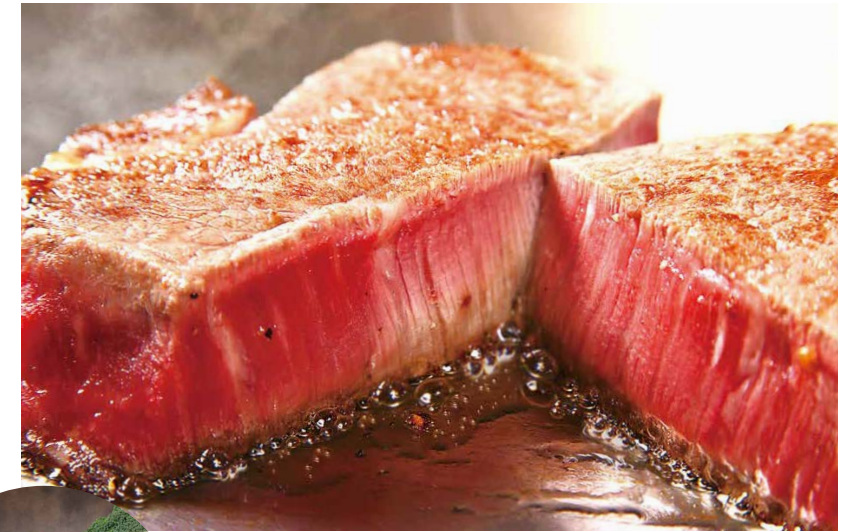


## Wagyu



### Nagasaki Wagyu

Nagasaki Wagyu is raised in a comfy environment where the air is relatively cool in the summer and warm in the winter. It has distinctive mellow umami and succulence.



### Imari Beef [Imari]

Imari beef, carefully raised in abundant natural surroundings, has a fine texture and is exquisitely tender.

## Brands

## Sweet Treats



### Salted soft-serve ice cream

[Shinkamigoto]

This soft-serve ice cream is blended with the local specialty, nigari (bittern). The perfect balance of sweetness and saltiness can be addictive!

### Satsuma sorbet

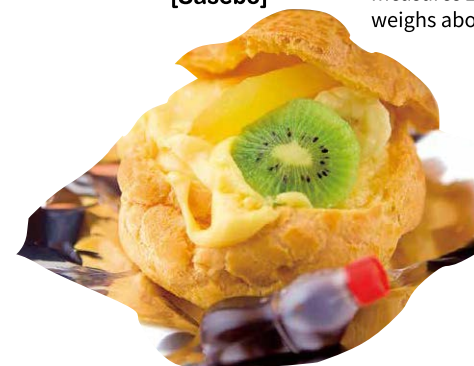
[Saikai]

Made with Saikai's specialty, satsuma mandarins. The scent of satsuma and texture are refreshing. There are also vegetable-flavored varieties on offer.



### Jumbo choux buns [Sasebo]

This formidably-sized dessert is made with lashings of crème pâtissière and fruits. It measures 25cm in diameter and weighs about 2kg.



### Sonogi tea Swiss roll

[Higashisonogi]

Made with Sonogi tea. The soft sponge cake and moderately sweetened cream accentuate the tea's flavor and aroma. The cake is accented with dainagon azuki beans.



# Sightseeing Routes

Recommended Routes

## Nishi-Kyusyu Sasebo Regional Tourism Route A

3 nights/4 days ARR/DEP FUKUOKA AIRPORT

**START**

**Day 1** Fukuoka Airport → Expy bus (Approx. 120 min) → Huis Ten Bosch → P06

**Day 2** Kujukushima Islands → Kujukushima cruise → Sasebo burger → Hirado → Hirado Castle → P08

**Day 3** Hirado → Doya Rice Terraces → Matsuura → P09 → Okawachiyama → Imari → Imari Ware → P11

**Day 4** Imari → Arita Ware → Arita → P17 → Expy bus (Approx. 80 min) → Fukuoka Airport

**Finish!**

## Pottery & Brewery/Distillery Tour Route

3 nights/4 days ARR/DEP FUKUOKA AIRPORT

**START**

**Day 1** Fukuoka Airport → Approx. 160 min → Imari Ware → P11

**Day 2** Arita Ware → P17 → Approx. 10 min → Hasami Ware → P14 → Approx. 30 min → Mikawachi Ware (Sasebo) → Umegae Shuzo → Huis Ten Bosch → P06

**Day 3** Senryu Shuzo (Sasebo) → Kujukushima Islands → Approx. 90 min → Mori Shuzo (Hirado) → P08

**Day 4** Mori Shuzo (Hirado) → Approx. 250 min → Fukuoka Airport

**Finish!**

## Nishi-Kyusyu Sasebo Regional Tourism Route B

3 nights/4 days ARR/DEP FUKUOKA AIRPORT

**START**

**Day 1** Fukuoka Airport → Expy bus (Approx. 120 min) → Kujukushima & Tenkaiho Observatory → P04

**Day 2** Nagasaki Wagyu → Huis Ten Bosch → P06

**Day 3** Saikai → Nagasaki Bio Park → Peacock Garden → Kawatana → P13 → Hasami Ware → Hasami → P14

**Day 4** Hasami → Tenku-no-Chabatake (Sonogi tea plantation) → Higashisonogi → P17 → Expy bus (Approx. 170 min) → Fukuoka Airport

**Finish!**

## Island Tour Route

3 nights/4 days ARR/DEP FUKUOKA AIRPORT

**START**

**Day 1** Fukuoka Airport → Expy bus (Approx. 120 min) → Sasebo Port → High-speed boat (Approx. 85 min) → Ojika Island → P15

**Day 2** Ojika Island → Tsushimaze Lighthouse → Uku Island → P16

**Day 3** Uku Island → Shinkamigoto Island → P16 → Sunset at Yagatame (Shirakusa Park)

**Day 4** Shinkamigoto Island → Island fishermen's breakfast → Hakata Port → P16 → Kashiragashima Church → Salted soft-serve ice cream → Fukuoka Airport

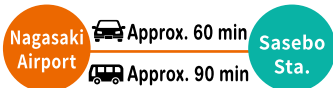
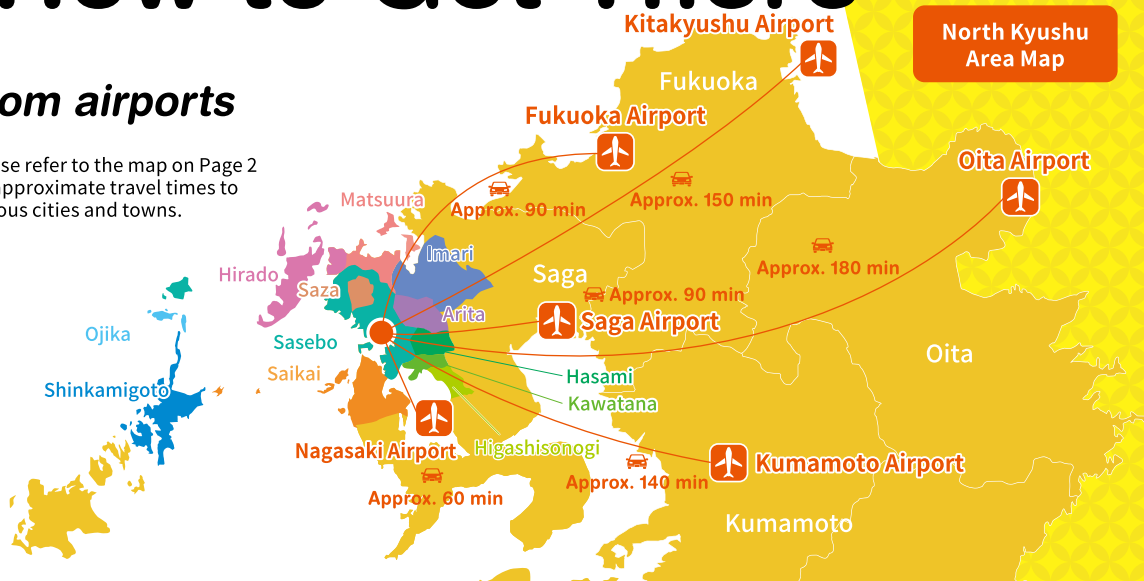
**Finish!**

# How to Get There



## From airports

Please refer to the map on Page 2 for approximate travel times to various cities and towns.



## Tourism Information

### Sasebo

Sasebo Tourist Information Center  
(Sasebo Convention & Visitors Association)  
21-1, Miura-cho, Sasebo, Nagasaki Prefecture, 857-0863  
(JR Sasebo Station)  
TEL: 0956-22-6630

### Hirado

Hirado Tourist Association  
1st Floor, 510, Tsukiji-cho, Hirado, Nagasaki Prefecture, 859-5114  
TEL: 0950-23-8600

### Matsuura

Matsuura-shi Tourism Bureau  
Matsuura Kotsu Center, 1038-3, Uramen, Shisa-cho, Matsuura, Nagasaki Prefecture, 859-4501 (MR Matsuura Station building)  
TEL: 0956-76-8822

### Saikai

NPO Saikai City Tourist Association, Tourism Division  
1686-1, Jikibago, Seihi-cho, Saikai, Nagasaki Prefecture, 851-3305  
TEL: 0959-37-5833

### Imari

Imari City Tourist Association  
622-13, Shinten-cho, Imari, Saga Prefecture, 848-0041  
TEL: 0955-23-3479

### Higashisonogi

Higashisonogi Town Hall, Urban Development Department, Trade, Commerce and Tourism Section  
1850-6, Kuramoto, Higashisonogi-cho, Higashisonogi District, Nagasaki Prefecture, 859-3808  
TEL: 0957-46-1286

### Kawatana

Kawatana Tourism  
272, Ogushigo, Kawatana-cho, Higashisonogi District, Nagasaki Prefecture, 859-3618  
TEL: 0956-83-3210

### Hasami

Hasami Tourist Association  
2255-2, Isekigo, Hasami-cho, Higashisonogi District, Nagasaki Prefecture, 859-3711  
TEL: 0956-85-2290

### Ojika

Ojika Island NPO Ojika Island Tourism Association  
2791-13, Fuefukigo, Ojika-cho, Kita-Matsuura District, Nagasaki Prefecture, 857-4701  
TEL: 0959-56-2646

### Shinkamigoto

Shinkamigoto Town Tourism Association  
428-31, Arikawago, Shinkamigoto-cho, Minami-Matsuura District, Nagasaki Prefecture, 857-4211  
TEL: 0959-42-0964

### Arita

Arita Tourism Association  
1-1-1, Kobira, Arita-cho, Nishi-Matsuura District, Saga Prefecture, 844-0005  
TEL: 0955-43-2121

### Saza

Saza Town Hall, Industry & Economy Department, Trade, Industry & Tourism Section  
168-2, Hontabarumen, Saza-cho, Kita-Matsuura District, Nagasaki Prefecture, 857-0392  
TEL: 0956-62-2101